

SAMJOO ELECTRONICS CO., LTD.



SAMJOO ELECTRONICS CO., LTD.

64-14, Changhyeon-ri, Hwadoeup, Namyangju-si Gyeonggi-do, Korea

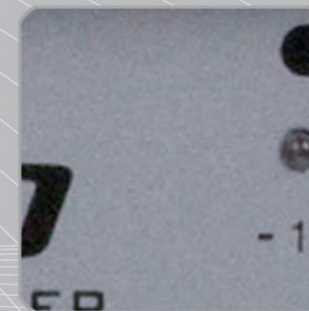
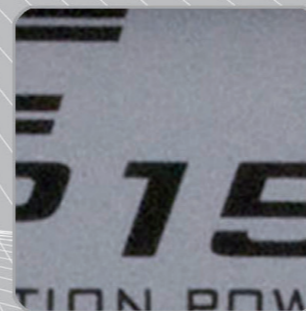
• Tel : 031-594-8861(REP) • Fax : 031-593-3780
• e-mail : samjoo@sje.co.kr • URL : www.sje.co.kr

Overseas sales

• Tel : 82-31-594-8865 • Fax : 82-31-593-3780
• e-mail : sales@samjoo-jec.com • URL : www.samjoo-jec.com



MEGAPHONE / PUBLIC ADDRESS SYSTEMS



2009 May SAMJOO Electronics Co., Ltd. All Rights Reserved. Printed in KOREA

SAMJOO ELECTRONICS CO., LTD.

Profile

Since its foundation in 1998, Samjoo Electronics Co., Ltd. has manufactured megaphones, horn speakers and later added PA SPEAKER(column/ceiling/wall speaker) to the producing product list according to the plan for company growth. In 2004, we had developed and are now supplying large-diameter horn speakers (Reflex horn) combinable with driver units(without/with transformer). From the year of 2005, we'd developed and are supplying PA-amplifiers and microphones. We provide our products in the brand name of JEC in the domestic market and export them to Germany and Italy in the same brand name and to other regions on OEM basis. We are gearing up raising our brand name recognition constantly. We have reorganized our system and business with ISO9001 and ISO14001 Certification and are doing our best to meet the rapidly changing market situation with our strict quality control and research and development. We introduce new products with competitive price and quality in the markets every year. We have developed megaphones without howling, which is acknowledged its excellent quality in foreign and domestic markets. We have developed the thermostable and abrasion-resistant diaphragm by specially coating voice coil of nano-materials developed in August, 2004, and applied it to horn speakers and large output driver units (output variable type with a built-in transformer), whose excellent quality is acknowledged in the Middle East with high temperature. We will make constant efforts to produce excellent and reliable products to satisfy our customer needs, and all our staff are making every effort to serve our customers as the family of Samjoo Electronics Co., Ltd. We expect your constant concerns and support. Thank you.

History

- 1998 Aug. Factory registration and trading business permission
- 2000 Mar. CE MARK Certification(JE-303 series, JE-583 series).
- 2002 Jun. Obtained the Q-MARK.
- 2004 Jan. Acquired ISO 9001, ISO 14001 certifications. Awarded with the Gyeonggi Governor Prize in the Electronic Trade category.
- 2005 Apr. Participated in the " Iraq Rebuilding Expo(Jordan). Jun. Obtained the CE MARK certification(Megaphone SJM-740SW) Oct. Participated in the Hong Kong Electronic Expo.
- 2006 Apr. Acquired the "Certificate of Conformity" (COC) from Saudi Arabia
- 2007 Sep. Participated in G-Fair 2007 at KINTEX
- 2008 Sep. Participated in NCS(National Safety Council) at Anaheim in USA Oct. Participated in GITEX at Dubai World Trade Center in Dubai. Dec. Participated in "23RD International Autumn Trade Fair" at Dubai World Trade Center in Dubai.
- 2009 Jan. Designated " INNO-BIZ" from SMBC Mar. Obtained the CE MARK certification (Megaphone SJM-820RSW, SJM-50BS)



MEGAPHONE / LOUD-HAILER / BULLHORN

Max 20W

MEGAPHONE

Portable power megaphones provide optimal reinforcement for various applications in different environment. Being a multipurpose type megaphone with maximum output of 20 watt, durable. It is most economical, small and even just light 0.7kg (w/o battery). The sound of it can reach far to every corner

- **Wherever there is an Event team play.**
 1. It is best to be used at crowded area and such places like traffic control, school event, cheering event, wide playground as soccer, rugby and baseball. leisure activities at sea, mountain, outdoor locations and also at swimming beach or remote mountain area.
- **Anywhere you need to be.**
 2. This model is one of reliable safety tool that can be an aid to emergency disaster (fire), natural disaster (earthquake, typhoon), and state of emergency, taking the role of prerequisite tool for guiding and instructing people at the time of extraordinary situation.



FUNCTION GUIDE

Model	CHARGE : YES OR NO	Accessories
SJM-820A	Without rechargeable type	• Tie pin Microphone(option)
SJM-820SW		
SJM-820RA	With rechargeable type	• Battery 8pcs x 1.2V(1300mAh) AA size • Adaptor(DC 12V, 500mA) • Tie pin Microphone(option)
SJM-820RSW		

SPECIFICATION

- Power : Max. 20W
- Power Source : DC 12V(battery AA 1.5V x 8PCS)
- Dimensions : 130Ø x 200mm
- Net Weight(without battery) : 0.7Kg
- City Area : 300m(328yard)
- Out Side of the City : 900 m(980yard)
- Battery life(Voice) : 8hours



MEGAPHONE / LOUD-HAILER / BULLHORN

Max 35W

This model is strongly recommended as it is a multipurpose type of being able to be used either as a hand-grip type or shoulder type. Being a microphone detachable type, it is advantageous to use for long time. This model performs great effect to the use at such places as construction site, very noisy street, police station, fire station, military training, school event, outdoor convocation.

FUNCTION GUIDE

- SJM-740A : MIC
- SJM-740SW : MIC & SIREN & WHISTLE

SPECIFICATION

- Power : Max. 35W
- Power Source : DC 12V(Battery CM 1.5V x 8PCS)
- Dimensions : 211Ø x 365mm
- Net Weight(without battery) : 1.7Kg
- City Area : 400 m(434yard)
- Out Side of the City : 1,400m(1,520yard)
- Battery Life(Voice) : 10 hours



Max 40W

HAND HELD & SHOULDER TYPE

- With built-in siren function.
- Hand grip and shoulder strap type
- Maximum power 40 watts
- A big strong horn.

- It is good for many people gather, such places as fire station, police station, army, school, large scale outdoor convocation.

FUNCTION GUIDE

- SJM-50B : MIC
- SJM-50BS : MIC & SIREN

SPECIFICATION

- Out Power : Max. 40W
- Power Source : DC 12V(Battery CM 1.5V x 8PCS)
- Dimensions : 300Ø x 460mm
- Net Weight(without battery) : 2.5Kg
- City Area : 600m(656yard)
- Out Side of the City : 1,800m(1,960yard)
- Battery Life(Voice) : 7 hours



Max 15W

Being a multipurpose type megaphone with maximum output of 15 watt, This model take the role of prerequisite tool for crowd control, fire, sports activities etc. There are 3 colors (red, yellow, white).

FUNCTION GUIDE

- JE-303A : MIC
- JE-303S : MIC & SIREN
- JE-303SW : MIC & SIREN & WHISTLE

SPECIFICATION

- Power : Max. 15W
- Power Source : DC 12V(battery AA 1.5V x 8PCS)
- Dimensions : 190Ø x 315mm
- Net Weight(without battery) : 1Kg
- City Area : 300m(328yard)
- Out Side of the City : 900 m(980yard)
- Battery life(Voice) : 8 hours



Max 25W

This model, being a multipurpose type megaphone with output of 25 watt, It can be used at a variety of such places as religious events, various rescue activities, sports, police stations, guide, fire station, construction site.

FUNCTION GUIDE

- JE-583 A : MIC
- JE-583 S : MIC & SIREN
- JE-583 ASW : MIC & SIREN & WHISTLE

SPECIFICATION

- Power : Max. 25W
- Power Source : DC 9V(Battery CM 1.5V x 6PCS)
- Dimensions : 211Ø x 375mm
- Net Weight(without battery) : 1.6Kg
- City Area : 350m(382yard)
- Out Side of the City : 1km(1,090yard)
- Battery Life(Voice) : 8 hours



MEGAPHONE / LOUD-HAILER / BULLHORN

Max 25W

This product is strongly recommendable model in terms of the cost, output, and the use. Since this model is microphone detachable shoulder type, it is advantageous when you use it for long time. This model, being a multipurpose type megaphone with output of 25 watt, it can be used at a variety of such places as religious events, various rescue activities, sports, police stations, guide, fire station, army trading, construction site.

FUNCTION GUIDE

- JE-583 B : MIC
- JE-583 BS : MIC & SIREN
- JE-583 BSW : MIC & SIREN & WHISTLE

SPECIFICATION

- Power : Max. 25W
- Power Source : DC 9V(Battery CM 1.5V x 6PCS)
- Dimensions : 211Ø x 345mm
- Net Weight(without battery) : 1.7Kg
- City Area : 350m(382yard)
- Out Side of the City : 1km(1,090yard)
- Battery Life(Voice) : 8 hours



Max 25W

Mini but Power Megaphone!!

Being a multipurpose type megaphone with maximum output of 25 watt, it is advantageous to use it for long time as it is microphone detachable shoulder type product, and also convenient to carry because it is small type with high output. It is good for you to use at picnic, marching and various events.

FUNCTION GUIDE

- JE-583 M : MIC
- JE-583 MS : MIC & SIREN
- JE-583 MSW : MIC & SIREN & WHISTLE
- JE-583 MR : MIC
- JE-583 MRS : MIC & SIREN
- JE-583 MRSW : MIC & SIREN & WHISTLE

SPECIFICATION

- Power : Max. 25W
- Power Source : DC 9V(Battery CM 1.5V x 6PCS)
- Dimensions : 120 x 120 x 250mm(Square) / 152Ø X 250mm (Circle)
- Net Weight(without battery) : 1.4Kg
- City Area : 300m(328yard)
- Out Side of the City : 800 m(870yard)
- Battery Life(Voice) : 8 hours



JE-583M series



JE-583MR series

Max 45W

This model, being a microphone detachable shoulder type and mobile megaphone with large output of 45 watt, is used at places where many people gather, and such places as fire station, police station, military unit, school event, large scale outdoor convocation. It is a functional safety tool which can be an aid to emergency disaster, natural disaster, or state of emergency.

As it is equipped with external power supply device (Aux jack) fit for vehicle connection, it can be used at outdoor places without battery attached, once it is connected to vehicle. (built-in socket for external power source DC 12V)

As external audio amplification function (AUX JACK) is built-in, even small sound can be amplified. Mountable on an optional speaker stand.

FUNCTION GUIDE

- SJM-680S : MIC & SIREN : WIRE
- SJM-680WL : MIC & SIREN : WIRELESS

SPECIFICATION

- Out Power : Max. 45W
- Power Source : DC 15V(Battery R20 1.5V x 10 PCS)
- Dimensions : 350Ø x 505mm
- Net Weight(without battery) : 3.3Kg
- City Area : 800m(870yard)
- Out Side of the City : 2,200m(2,390yard)
- Battery Life(Voice) : 7 hours



SJM-680S



SJM-680WL



MEGAPHONE / LOUD-HAILER / BULLHORN

JEC WMA-7110

Portable voice amplifier, ideal for teaching, conference room, lecture, auction, sales promotion, tourguide and outgoing activities.

FEATURES

- Tone control
- Rechargeable LED, Microphone volume control
- Audio in : 3.5Ø jack

SPECIFICATION

- Max. Power : 5W
- Total harmonic distortion : 5% max
- Frequency response : 100Hz - 10KHz
- Operating temperature : -10C to 45C
- Power voltage : DC7.2V(AA 1.2V x 6pcs)
- Demensions : 140 x 90 x 45mm
- Net weight(without battery) : 260g
- Color : Milky white



SV-970S

FEATURES

- Built-in socket for external power source DC 12V, aux jack 3.5Ø
- 2A adaptor (3.5Ø Aux jack) is available.
- Built in siren.
- Use with external microphone.

SPECIFICATION

- Out Power : Max. 30W
- Power Source : DC 13.5V(DM, R20 1.5V x 9PCS)
- Dimensions : 150 x 270 x 320mm
- Net Weight(without battery) : 4.2Kg
- City Area : 350m(380yard)
- Out Side of the City : 1,000m(1,085yard)
- Battery Life (Voice) : 10 hours



SV-15PA

This model, being a mobile type megaphone with its large output of 30 watt, performs great effect to the use at such places as outdoor training, or wide area where many people gather

FEATURES

- Microphone 1, 2

SPECIFICATION

- Out Power : Max. 30W
- Power Source : DC 12V(4R25 6V x 2PCS)
- Dimensions : 180 x 270 x 330mm
- Net Weight(without battery) : 2.5Kg
- City Area : 350 m(380yard)
- Out Side of the City : 1,000m(1,085yard)
- Battery Life : 10 hours



P.A. AMPLIFIER



- Adopted MIC 1, 2, 3 balanced input circuit
- Built-in 2 band E.Q.
- Over-heating protection circuit
- MIC 1 is prior to other channels
- Possible to installed in 19" Rack cabinet
- Mic 1~3, Aux 1~2, Tape input 1

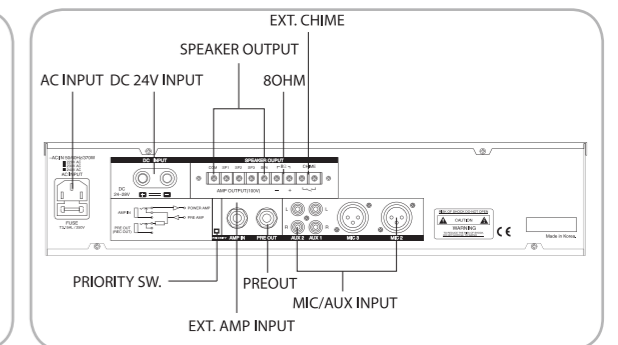
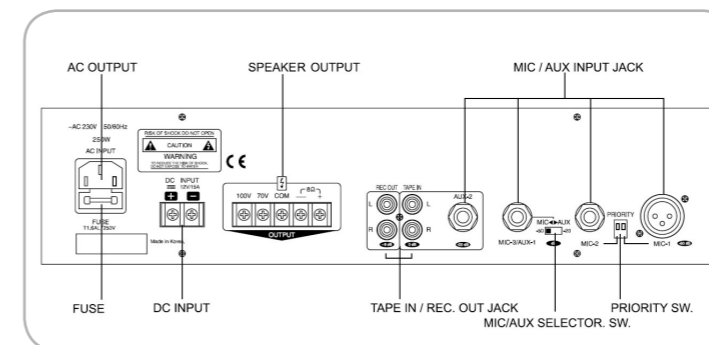
- Adopted MIC 1, 2, 3 balanced input circuit
- Built-in 3 band E.Q.
- Chime, Siren
- MIC 1, Chime and Siren are prior to other channels
- Possible to installed in 19" Rack cabinet
- Speaker Selector 4CH(1, 2, 3, 4, All)
- AUX 1, 2
- Pre Out (REC Out)
- Over-heating protection circuit
- Ext. Amp Input

FUNCTION GUIDE

Model	SJP-900
Rated Output Power	90W
Output Impedance	8Ω, 100V
T.H.D(1KHz)	Less than 10% at 90W/ Less than 1% at 70W
S/N Ratio	More than 70dB
Frequency Response	50Hz~15KHz(-3dB, 8Ω/1W)
Input Sensitivity MIC	MIC : -50dB/2KΩ
	AUX1 : -20dB/60KΩ BAL
	AUX2 : -20dB/15KΩ BAL
	TAPE : 0dB/3KΩ UN BAL
Priority	Mic 1
Power source	AC 220V~240V / 50, 60Hz, 12VDC
Power consumption	210W
Weight	7Kg
Dimensions(mm)	375(W) x 88(H) x 260(D)mm

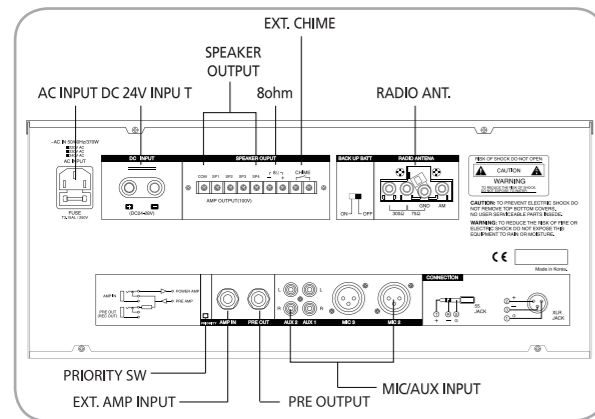
Model	SJP-1500	SJP-2700
Rated Output Power	120W	240W
Output Impedance	8Ω, 100V(83Ω)	8Ω, 100V(42Ω)
T.H.D(1KHz)	Less than 0.5%	
S/N Ratio	More than 70dB	
Frequency Response	50Hz~15KHz(-3dB, 8Ω/1W)	
Input Sensitivity MIC	MIC : -50dBm/600Ω(Balanced)	
	Line : -10dbm/15KΩ(Un-balanced)	
Amp In	0dbm/15KΩ(Un-balanced)	
Pre Out	0dbm/10KΩ(Un-balanced)	
Priority	Mic 1, Chime, Siren	
Power source	AC 120V~240V / 50, 60Hz DC 24V	
Power consumption	370W	680W
Weight	15Kg	18Kg
Dimensions(mm)	420(W) x 88(H) x 350(D)mm	

REAR PANEL



P.A. AMPLIFIER

SJP-1500D / SJP-2700D



DESCRIPTION

- Adopted MIC 1, 2, 3 balanced input circuit
- Built-in 3 band E.Q.
- Pre Out (REC Out)
- Over-heating protection circuit
- MIC 1, Chime and Siren are prior to other channels
- Possible to installed in 19" Rack cabinet
- Built-in Recordable Logic Cassette Deck
- Possible to install CDP module(Optional)
- Speaker Selector 4CH(1, 2, 3, 4, All)
- AUX 1, 2
- Ext. Amp Input
- Chime, Siren

Model	SJP-1500D	SJP-2700D
Rated Output Power	120W	240W
Output Impedance	8Ω, 100V(83Ω)	8Ω, 100V(42Ω)
T.H.D(1KHz)	Less than 0.5%	
S/N Ratio	More than 70dB	
Frequency Response	50Hz~15KHz(-3dB, 8Ω/1W)	
Input Sensitivity MIC	MIC : -50dBm/600Ω(Balanced)	
Line	-10dbm/15KΩ(Un-balanced)	
Amp In	0dbm/15KΩ(Un-balanced)	
Pre Out	0dbm/10KΩ(Un-balanced)	
Priority	Mic 1, Chime, Siren	
Power source	AC 120V~240V / 50, 60Hz DC 24V	
Power consumption	370W	680W
Weight	18Kg	20Kg
Dimensions(mm)	422(W) x 176(H) x 350(D)mm	

CD Player(Optional)



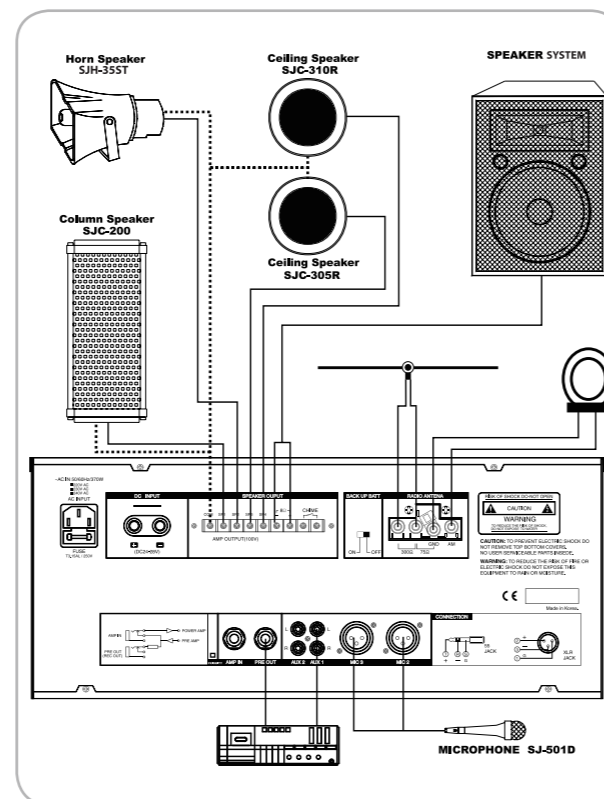
FEATURE

- Top Track play
- Repeat play
- Cue/Review function
- Intro Scan play
- Random play

SPECIFICATION

Digital Filter	8Times Over Sampling
T.H.D(1KHz)	More than 0.5%
S/N Ratio	More than 85dB
Frequency Response	10Hz~20KHz(1dB)
Wow/Filter	Below Measurable Limits
Loading Time	6sec
Weight	1.3Kg
Dimensions(mm)	195(W) x 40(H) x 210(D)mm

SYSTEM CONNECTIONS



SPEAKER SYSTEM

SURROUND SPEAKER

SPECIFICATION

SURROUND SPEAKER	SE-540S	SE-540SM
Type	5 inch, 2 Way, 2 Speaker system	5 inch, 2 Way, 2 Speaker system
SPL(1w.1m)	99±2dB	98±2dB
Frequency Range	50Hz ~ 19KHz	60Hz ~ 18KHz
Impedance	8Ω	8Ω . 250Ω
Rated Input Power	40W	
Maximum Music Power	80W	
Dimension(mm)	245(W) x 150(H) x 160(D)mm	
Net Weight	1.4Kg	1.6Kg
Material	ABS resin + Steel	



SPEAKER SYSTEM

SPECIFICATION

SPEAKER SYSTEM	SE-10200
Type	10 inch, 2Way, 2 Speaker system
SPL(1w.1m)	95±2dB
Frequency Range	45Hz ~ 20KHz
Impedance	8Ω
Rated Input Power	200W
Maximum Music Power	400W
Dimension(mm)	335(W) x 600(H) x 385(D)mm



SPEAKER SYSTEM

SPECIFICATION

MODEL	SE-12300
Type	12 inch, 2Way, 2 Speaker system
SPL(1w.1m)	96±2dB
Frequency Range	30Hz ~ 20KHz
Impedance	8Ω
Rated Input Power	300W
Maximum Music Power	600W
Dimension(mm)	445(W) x 700(H) x 460(D)mm



POWERED MIXER AMPLIFIER

PM-1040SE / 400W



SPECIFICATION

- 6 mono, 2 stereo input
- Available to use various input devices through AUX IN, TAPE IN
- Built-in 7 Band E.Q. for master out
- High quality 16 band Digital Reverb
- Built-in 3 band E.Q. for each 6 mono input
- Available to use Phantom Power (DC+48V)
- 19" rack mounting is available.

Output Power	PM-1040SE	PM-1060SE
4Ω x 2CH	200W+200W	300W+ 300W
8Ω mono(Bridge mode)	400W	600W

PM-1060SE / 600W



- Input Sensitivity : +4 dbm
- Frequency Response : 20Hz ~ 20kHz (4Ω/1W)
- S/N Ratio : More than 85dB
- T.H.D (1KHz) : Less than 0.5%
- Power Supply : AC 220~240V / 50,60Hz
- Power Consumption : 1000W
- Weight : 23kg/25kg
- Dimensions : 505(W) x 280(H) x 325(D) mm

SPECIFICATION

Model	SJ-301D	SJ-501D	SJ-601C
Type	Dynamic	Dynamic	Condenser
Impedance	600Ω(at 1kHz)	600Ω(at 1kHz)	600Ω(at 1kHz)
Sensitivity	-74dB±3dB(0dB=1V/0.1Pa, 1kHz)		-65dB±3dB
Frequency	50Hz~13KHz		50Hz~20KHz
Materials	Aluminum	Die-casting alloy	Die-casting alloy
Finish	CR Painting		



SJ-301D



SJ-501D



SJ-601C

EVENT POWER AMPLIFIER



SJP-500WA / 1000WA

SPECIFICATION

Model	SJP-500WA	SJP-1000WA
Output(Rated)	50W	100W
Function	Microphone Jack x 2pcs / Aux / Siren Radio / Cassette Tape Player	
Speaker unit	12"	
Power supply	AC220V / DC24V	
Wireless	Wireless microphone supplied(200mm)	
Dimensions(mm)	630 x 420 x 300mm	

SPECIFICATION

Model	SJP-500PA	SJP-1000PA
Output(Rated)	50W	100W
Function	Microphone Jack x 2pcs / Aux / Siren Radio / Cassette Tape Player	
Speaker unit	12"	
Power supply	AC220V / DC24V	
Dimensions(mm)	620 x 420 x 300mm	



SJP-500PA / 1000PA



SJP-1500WA / 2000WA

SPECIFICATION

Model	SJP-1500WA	SJP-2000WA
Output(Rated)	150W	200W
Function	Microphone Jack x 3pcs / Aux / Siren Radio / Cassette Tape Player	
Speaker unit	12" x 2pcs	
Power supply	AC220V / DC24V	
Wireless	Wireless microphone supplied(200mm)	
Dimensions(mm)	900 x 530 x 380mm	

SPECIFICATION

Model	SJP-1500PA	SJP-2000PA
Output(Rated)	150W	200W
Function	Microphone Jack x 3pcs / Aux / Siren Radio / Cassette Tape Player	
Speaker unit	12" x 2pcs	
Power supply	AC220V / DC24V	
Dimensions(mm)	890 x 530 x 380mm	



SJP-1500PA / 2000PA

HORN SPEAKERS

Be applied in warehouses, school, community center and addressing on publicity service.
Straight and ultra high power horns give a highly articulate sound performance in a wide area or at large gatherings of people.



FEATURES

The thermostable and abrasion-resistant diaphragm by specially coating voice coil of nano-materials and applied it to horn speaker.

SPECIFICATION

MODEL	JE-25R/JE-25RT	JE-35R/JE-35RT	JE-50R/JE-50RT
Input Power (Rated)	25W	35W	50W
Input voltage	100V line		
Impedance	JE-25R : 8Ω	JE-35R : 8Ω	JE-50R : 8Ω,
	JE-25RT : 400 Ω(25W), 667Ω(15W)	JE-35RT : 285 Ω(35w), 400Ω(25W)	JE-50RT : 200 Ω(50w), 285 Ω(35w)
Dimensions(mm)	245Øx280mm	280Øx290mm	337 Ø x 362mm
Frequency Range	250Hz~7Khz		
SPL(1w.1m)	108dB	112dB	116dB
Materials	Aluminum horn/ABS back cover	Aluminum horn/diecasting cover	
Net weight	1.9kg, 2.5kg	2.02kg, 2.6kg	2.4kg, 3.2kg

SPECIFICATION

Widely used on the vessel. Double coating.
Once the bracket mounted on the horn, absolutely on moving.

MODEL	SJH-35S/35ST	SJH-50S/50ST
Input Power(Rated)	35W	50W
Input voltage	100V line	
Impedance	SJH-35S : 8Ω	SJH-50S : 8Ω
	SJH-35ST : 285Ω, 400Ω	SJH-50ST : 200Ω, 285Ω
Dimensions(mm)	206 X 317 X 365mm	
Frequency Range	250Hz-7KHz	
SPL(1w.1m)	112dB	116dB
Materials	ABS Resin	
Net weight	2.2kg, 2.80kg	2.2kg, 3kg



P.A. SPEAKER

These horn speakers provide best performance in the harshest environments and give a highly articulate sound performance in any areas.



FEATURES

- 10W, 15W, 20w(100V LINE) are available.
- Mounting Bracket supplied
- Round or square type.
- The material of horn flat is ABS resin.

MODEL	JE-15WR/15WRT	JE-20S/20ST	JE-20WR/20WRT
Input Power(Rated)	15W	20W	20W
Input voltage	100V line		
Impedance	JE-15WR : 8Ω	JE-20S : 8Ω	JE-20WR : 8Ω
	JE-15WRT : 1KΩ,667Ω	JE-20ST : 500Ω,667Ω	JE-20WRT : 500Ω,667Ω
Dimensions(mm)	152Ø X 190mm	120 x 120 x 190mm	211Ø x 282mm
Frequency Range	350Hz-7Khz		
SPL(1w.1m)	106dB		
Materials	ABS resin		
Net weight	1.1kg, 1.4kg	1.1kg, 1.4kg	1.5kg, 1.8kg

REFLEX HORN / TRUMPET HORN

SJH-75RH(20 ")



SPECIFICATION

- Its powder-coated finish and stainless screws.
- Dimensions : 500Ø x 410mm
- Net Weight : 3.16kg

SJH-TH40(17.32 ")



SPECIFICATION

- Dimensions : 440Ø x 980mm
- Net Weight : 1.96kg

COLUMN SPEAKER

Built in 5" speaker(10W). Approved KS Korean quality mark. • Nice Sound Column for general purpose Public Address Requirement

SPECIFICATION

Model	SJC-100	SJC-200	SJC-300	SJC-400
Input(Rated)	10W	20W	30W	40W
Frequency	150hz ~ 14kHz			
Impedance	4kΩ, 2KΩ, 1kΩ	2kΩ, 1KΩ, 500Ω	1kΩ, 660Ω, 330Ω	1kΩ, 500Ω, 250Ω
SPL(1w.1m)	90dB	92dB	95dB	96dB
Materials	Aluminum case / ABS plastic cover			
Color	White			
Weight	1.7Kg	2.6Kg	3.7Kg	4.5Kg
Dimensions(mm)	150 x 118 x 240mm	150 x 118 x 368mm	150 x 118 x 508mm	150 x 118 x 605mm



SPECIFICATION

※ Outdoor

Model	SJC-100WP	SJC-200WP	SJC-300WP	SJC-400WP
Input(Rated)	10W	20W	30W	40W
Frequency	150hz ~ 14kHz			
Impedance	4kΩ, 2KΩ, 1kΩ	2kΩ, 1KΩ, 500Ω	1kΩ, 660Ω, 330Ω	1kΩ, 500Ω, 250Ω
SPL(1w.1m)	90dB	92dB	95dB	96dB
Materials	Aluminum case/ABS plastic cover			
Color	White			
Weight	1.7Kg	2.6Kg	3.7Kg	4.5Kg
Dimensions(mm)	150 x 118 x 240mm	150 x 118 x 368mm	150 x 118 x 508mm	150 x 118 x 605mm



Built in 5" speaker (10W)

SPECIFICATION

Model	SJC-2010	SJC-2020	SJC-3030	SJC-4040
Input(Rated)	10W	20W	30W	40W
Frequency response	150hz ~ 14kHz			
Impedance	4kΩ, 2KΩ, 1kΩ	2kΩ, 1KΩ, 500Ω	1kΩ, 660Ω, 330Ω	1kΩ, 500Ω, 250Ω
SPL(1w.1m)	90dB	92dB	95dB	96dB
Materials	All Aluminum			
Color	Off-white			
Weight	1.7Kg	2.6Kg	3.7Kg	4.5Kg
Dimensions(mm)	147 x 126 x 235mm	147 x 126 x 345mm	147 x 126 x 500mm	147 x 126 x 610mm



P.A. SPEAKER

- Metal front protection grille. • Input voltage : 100v line
- Be applied in conference rooms, auditoriums, lecture halls, Warehouses, Schools, Community centers, schools etc.

※ Built in 5" speaker(10W)

SPECIFICATION

Model	SJC-910CL	SJC-920CL	SJC-930CL	SJC-940CL
Input(Rated)	10W	20W	30W	40W
Frequency	150hz ~ 13kHz			
Impedance	2KΩ, 1kΩ	1KΩ, 500Ω	660Ω, 330Ω	500Ω, 250Ω
SPL(1w.1m)	90dB	92dB	95dB	96dB
Materials	Aluminum case/ABS plastic cover			
Color	brown			
Weight	1.6Kg	2.5Kg	3.4Kg	4.2Kg
Dimensions(mm)	147 x 124 x 230mm	147 x 124 x 370mm	147 x 124 x 510mm	147 x 124 x 610mm



※ Built in 3.5" speaker(5W).

ex) 10W=2pcs(5W X 2pcs), sufficient sound volume

SPECIFICATION

Model	SJC-710	SJC-720	SJC-730	SJC-740
Input(Rated)	10W	20W	30W	40W
Frequency	150hz ~ 13kHz			
Impedance	2KΩ, 1kΩ	1KΩ, 500Ω	660Ω, 330Ω	500Ω, 250Ω
SPL(1w.1m)	94dB	95dB	96dB	97dB
Materials	Aluminum case/ABS plastic cover			
Color	White			
Weight	1.3Kg	2.1Kg	2.9Kg	3.6Kg
Dimensions(mm)	113 x 90 x 295mm	113 x 90 x 475mm	113 x 90 x 655mm	113 x 90 x 835mm



※ Built in 3" speaker(10W) + 1tweeter

SPECIFICATION

Model	CS-10WR	CS-20WR	CS-30WR	CS-40WR
Input(Rated)	10W	20W	30W	40W
Frequency	150hz ~ 13kHz			
Impedance	2KΩ, 1kΩ	1KΩ, 500Ω	660Ω, 330Ω	500Ω, 250Ω
SPL(1w.1m)	90dB	92dB	95dB	96dB
Materials	Aluminum			
Color	Grey			
Weight	1.3Kg	2.1Kg	2.9Kg	3.6Kg
Dimensions(mm)	120 x 120 x 257mm	120 x 120 x 336mm	120 x 120 x 436mm	120 x 120 x 536mm



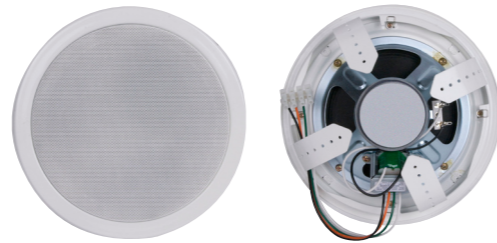
CEILING SPEAKER

- Built in 6.5" speaker. Approved KS Korean quality mark.
- Nice Sound Ceiling for general purpose Public Address Requirement

SPECIFICATION

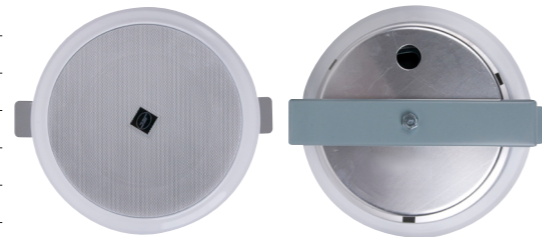
Model	SJC-303R	SJC-305R	SJC-310R
Input(Rated)	3W	5W	10W
Frequency	150Hz-14Khz		
Impedance	5kΩ, 3.3KΩ	3.3kΩ, 2KΩ	2kΩ, 1KΩ
SPL(1w.1m)	90dB	92dB	93dB
Materials	Aluminum/Steel		
Color	White		
Weight	1.02Kg	1.1Kg	1.12kg
Dimensions(mm)	233Ø X 95mm		

※ SJC-320R(20W) is available.



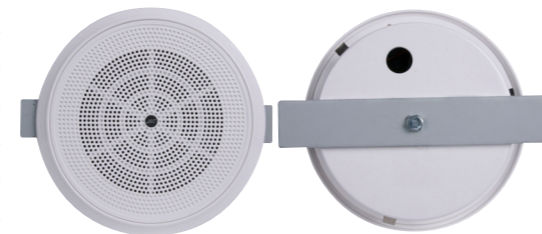
SPECIFICATION

Model	SJC-3RA	SJC-5RA	SJC-10RA
Input(Rated)	3W	5W	10W
Frequency	150Hz-14Khz		
Impedance	5kΩ, 3.3KΩ	3.3kΩ, 2KΩ	2kΩ, 1KΩ
SPL(1w.1m)	90dB	92dB	93dB
Materials	Aluminum		
Color	White		
Weight	1.02Kg	1.1Kg	1.12kg
Dimensions(mm)	235Ø X 95mm		



SPECIFICATION

Model	SJC-3RP	SJC-5RP	SJC-10RP
Input(Rated)	3W	5W	10W
Frequency	150Hz-14Khz		
Impedance	5kΩ, 3.3KΩ	3.3kΩ, 2KΩ	2kΩ, 1KΩ
SPL(1w.1m)	90dB	92dB	93dB
Materials	ABS		
Color	White		
Weight	1.03Kg	1.15Kg	1.17kg
Dimensions(mm)	225Ø X 95mm		

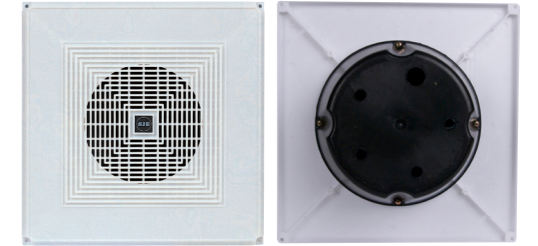


P.A. SPEAKER

- Input voltage : 100v line
- Be applied in conference rooms, auditoriums, lecture halls, Warehouses, Schools, Community centers, schools etc.

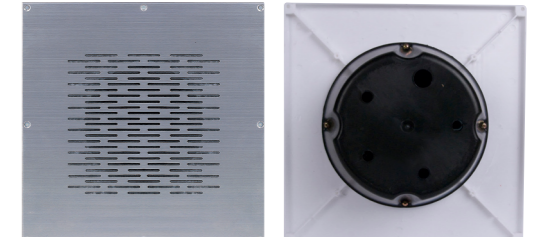
SPECIFICATION

Model	SJC-3S	SJC-5S	SJC-10S
Input(Rated)	3W	5W	10W
Frequency	150Hz-14Khz		
Impedance	5kΩ, 3.3KΩ	3.3kΩ, 2KΩ	2kΩ, 1KΩ
SPL(1w.1m)	90dB	92dB	93dB
Materials	HIPS		
Color	White		
Weight	0.98Kg	1Kg	1.06kg
Dimensions(mm)	300 X 300 X 100mm		



SPECIFICATION

Model	SJC-3SN	SJC-5SN	SJC-10SN
Input(Rated)	3W	5W	10W
Frequency	150Hz-14Khz		
Impedance	5kΩ, 3.3KΩ	3.3kΩ, 2KΩ	2kΩ, 1KΩ
SPL(1w.1m)	90dB	92dB	93dB
Materials	Stainless		
Color	Silver		
Weight	1.15Kg	1.2Kg	1.25kg
Dimensions(mm)	300 X 300 X 100mm		



MICROPHONE CABLE

Outer covering is soft and employing strong high functional PVC. And prevents electromagnetic waves noise by high density braid shield being more than braid density 98%



1/4" PHONE PLUG (KS-50) TO XLR "F"(SWITCHCRAFT CONNECTOR)



XLR "M" TO XLR "F"(SWITCHCRAFT CONNECTOR)



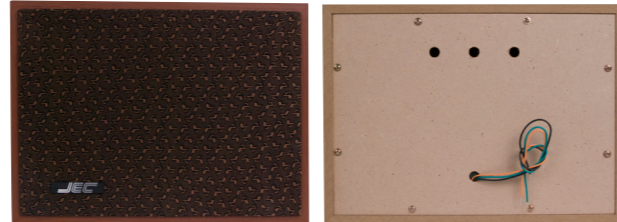
DUN-20(6m)

WALL SPEAKER

- Built in 6.5" speaker.
- Approved KS Korean quality mark.
- Input voltage : 100v line
- Use at department store, shopping mall center, hospitals, building and other similar occasions.

SPECIFICATION

Model	SJC-3WB	SJC-5WB	SJC-10WB
Input(Rated)	3W	5W	10W
Frequency	150Hz-14Khz		
Impedance	5kΩ, 3.3KΩ	3.3kΩ, 2KΩ	2kΩ, 1KΩ
SPL(1w,1m)	93dB		
Materials	Wood		
Color	Brown		
Weight	1.35Kg	1.48Kg	1.52kg
Dimensions(mm)	290 x 100 x 210mm		



SPECIFICATION

MODEL	SJC-03WA	SJC-10WA
Input Rated Power	3W	10W
SPL(1w,1m)	91±2dB	93±2dB
Frequency Range	130Hz~12KHz	110Hz~15KHz
Impedance	COM(Black)	COM(Black)
	3.3kΩ(Red)	1kΩ(Red)
	5kΩ(Red)	2kΩ(Red)
	10kΩ(Red)	3.3kΩ(Red)
Dimension(m/m)	240 x 345 x 100mm	240 x 345 x 100mm
Net Weight	1.4Kg	1.9Kg
Material	ABS resin + Steel	



SPECIFICATION

Model	SJC-P103N	SJC-P110N
Input(Rated)	3W	10W
Frequency	130Hz-12Khz	130Hz-12Khz
Impedance	8Ω, 3.3KΩ	8Ω, 1KΩ
SPL(1w,1m)	93dB	
Materials	ABS resin	
Color	White	
Weight	1.35Kg	1.5kg
Dimensions(mm)	273 x 200x 115mm	



POWER HORN SPEAKER

- High power and high efficiency and provides highly articulate sound in any harshest environment.



SPECIFICATION

Model	SJH-35WP	SJH-50WP	SJH-75WP	SJH-100WP	SJH-150WP
Input(Rated)	35W	50W	75W	100W	150W
Impedance	16Ω	8Ω			
SPL(1w,1m)	125dB	126dB	128dB	132dB	135dB
Frequency	250Hz - 5Khz				
Materials	Die-casting (driver unit, center horn), Outside horn(ABS)				
Weight	2.9Kg	3Kg	3.4kg	4.4kg	5.4kg
Dimensions(mm)	206 x 132x160mm	206 x 132x160mm	206 x 132 x 160mm	206 x 132 x 170mm	206 x 132 x 170mm

SJD-50FT without transformer

- Be applied in public address announcement applications.
- The driver unit in die-casting aluminum.
- The driver units are apply to SJH-75RH, SJH-TH40 or other drivers as per 1 3/8"-18 male throat horns.
- High power and high efficiency and provides highly articulate sound in any harshest environment.
- Power control: by move PIN.

FEATURES

- The thermostable and abrasion-resistant diaphragm by specially coating voice coil of nano-materials and applied it to driver unit.

SPECIFICATION

- Input(Rated) : 50W/40W/30W/20W
- Frequency Range : 150Hz - 5KHz
- S.P.L.(1W/1m) : 113dB
- Impedance : 285Ω, 200Ω
- Voice Coil Material : 49.5mm
- Net Weight : 2.6kg
- Dimensions : 110Ø x 135mm



DRIVER UNIT



SJD-35F



SJD-50F



SJD-75F



SJD-100



SJD-150

SPECIFICATION

MODEL	SJD-35F	SJD-50F	SJD-75F	SJD-100	SJD-150
Power Rating	35 Watts	50 Watts	75 Watts	100 Watts	150 Watts
Frequency Range	250~6 KHz	250~5,000 Hz	250~4,500 Hz	150~5,000 Hz	150~5,000 Hz
Impedance	8 Ohms				
Sound Pressure Level, 1000Hz					
Rated Power	125dB	126dB	128dB	132dB	135dB
1watts/m	110dB	112dB	110dB	112dB	114dB
Dispersion(1000Hz)	100H X 140V				
Diameter & Height	110 X 93mm	117 X 94mm	124 X 94mm	117 X 100mm	120 X 105mm
Voice Coil Diameter	49.5mm	51mm	51mm	66mm	66mm
Color / Finish	Black / Epoxy				
Mounting	1-3/8-18 UNEF, Threaded Throat				
Net Weight	1.7Kg	2.2Kg	2.7Kg	3.4Kg	3.68Kg
Materials	Ferrite	Ferrite	Ferrite	Nd	Alnico

ACCESSORY

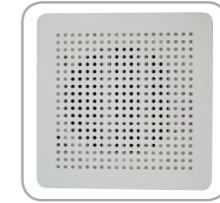
APT SPEAKER



SJC-1A



SJC-1B



SJC-1C



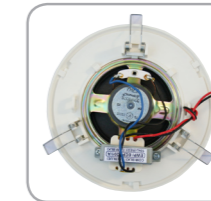
SJC-1RA



SJC-1RB



SJC-1RC



SPECIFICATION

Model	SJC-1A	SJC-1B	SJC-1C	SJC-1RA	SJC-1RB	SJC-1RC
Rated power	1W					
SPL(1w.1m)	82 dB					
Frequency range	250Hz ~ 12KHz					
Impedance	Com.(black), 10KΩ(Red)					
Dimensions(mm)	125 x 125 x 45mm				140Ø	130Ø
Net weight	200g				250g	
Materials	ABS plastic					

GOOSE NECK STAND



"I" STAND



SIGNAL LIGHT BAR

